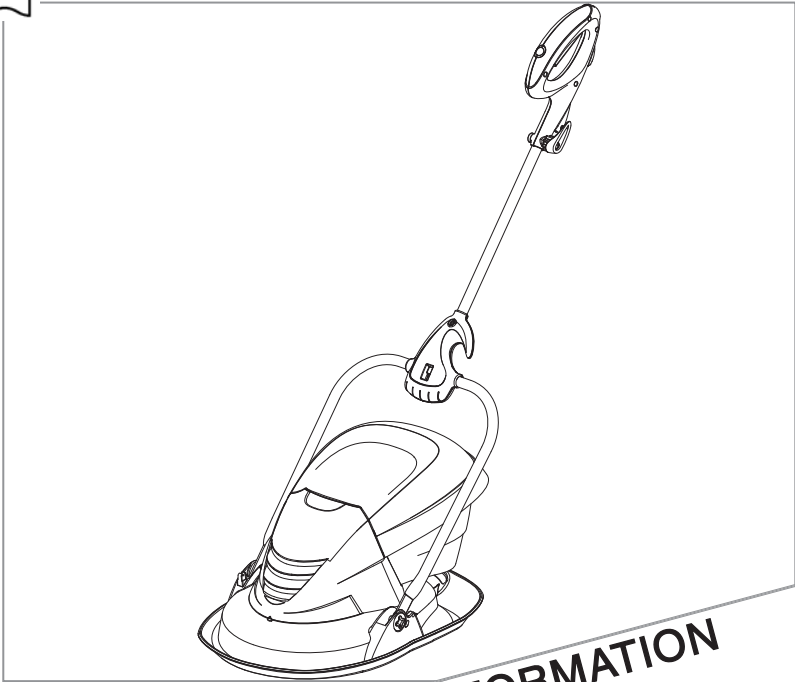




Mow n Vac

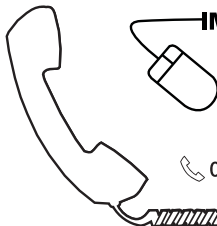


Original Instructions



WARNING

IMPORTANT INFORMATION
Read before use
& retain for future reference



IMPORTANT Please register your product warranty on line.

To register your warranty and for all your parts requirements please visit

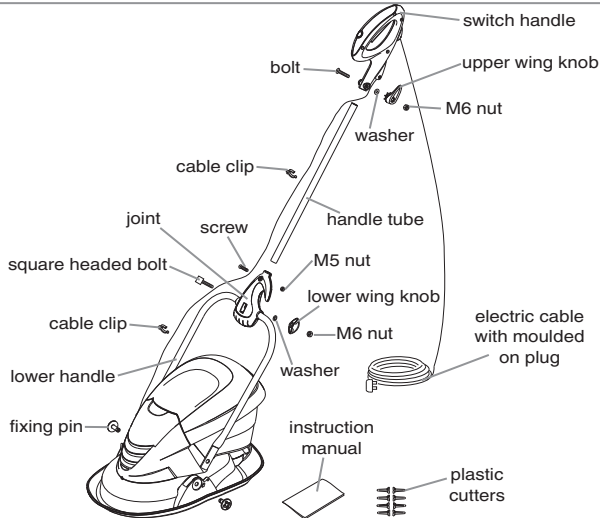
www.flymo.com

For all other enquiries

☎ 0844 844 4558 **UK** 1800 882 350 **ROI**

✉ customer.services@husqvarna.co.uk

Carton Contents



IMPORTANT!

Please check the contents of the carton are correct **BEFORE** assembling your new Flymo product.

IF ANY PARTS ARE MISSING CONTACT:-

Husqvarna UK Ltd. Customer Service Department direct

Telephone : 0844 844 4558 **UK**

1800 882 350 **ROI**

Fax : 01325 302530

Safety

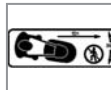


If not used properly this product can be dangerous! This product can cause serious injury to the operator and others, the warnings and safety instructions must be followed to ensure reasonable safety and efficiency in using this product. The operator is responsible for following the warning and safety instructions in this manual and on the product. Never use the product unless the grassbox or guards provided by the manufacturer are in the correct position.

Explanation of Symbols on the Mow n Vac



Warning



Keep bystanders away. Do not operate whilst people especially children or pets are in the area.



Read the user instructions carefully to make sure you understand all the controls and what they do.



Do not operate in the rain or leave the product outdoors while it is raining.



Switch off! Remove plug from mains before adjusting, cleaning or if cable is entangled or damaged. Keep the cable away from the plastic cutters.



The use of eye protection is recommended to protect against objects thrown by the plastic cutters.

General

1. This product is not intended for use by persons (including children) with reduced physical, sensory or mental capabilities, or lack of experience and knowledge, unless they have been given supervision or instruction concerning the use of the product by a person responsible for their safety. Children should be supervised to ensure that they do not play with the product. Local regulations may restrict the age of the operator.
2. Never allow children or people unfamiliar with these instructions to use the product. Local regulations may restrict the age of the operator.
3. Stop using the machine while people, especially children, or pets are nearby.

4. Only use the product in the manner and for the functions described in these instructions.
5. Never operate the product when you are tired, ill or under the influence of alcohol, drugs or medicine.
6. The operator or user is responsible for accidents or hazards occurring to other people or their property.

Electrical

1. The British Standards Institute recommend the use of a Residual Current Device (R.C.D.) with a tripping current of not more than 30mA. Even with a R.C.D. installed 100% safety cannot be guaranteed and safe working practice must be followed at all times. Check your R.C.D. every time you use it.
2. Before use, examine cable for damage, replace it if

there are signs of damage or ageing.

- Do not use the product if the electric cables are damaged or worn.
- Immediately disconnect from the mains electricity supply if the cable is cut, or the insulation is damaged. Do not touch the electric cable until the electrical supply has been disconnected. Do not repair a cut or damaged cable. Replace it with a new one.
- Your cable must be uncoiled, coiled cables can overheat and reduce the efficiency of your product.
- Keep cable away from product, always work away from the power point using up and down, never in circles.
- Do not pull cable around sharp objects.
- Always switch off at the mains before disconnecting any plug, cable connector or extension cable.
- Switch off, remove plug from mains and examine electric supply cable for damage or ageing **before** winding cable for storage. Do not repair a damaged cable, replace it with a new one. Use only Flymo replacement cable.
- Always wind cable carefully, avoiding kinking.
- Never carry the product by the cable.
- Never pull on the cable to disconnect any of the plugs.
- Use only on AC mains supply voltage shown on the product rating label.
- Our products are double insulated to EN60335. Under no circumstance should an earth be connected to any part of the product.

Preparation

- While using your product always wear substantial footwear and long trousers.
- Make sure the lawn is clear of sticks, stones, bones, wire and debris; they could be thrown by the plastic cutters.
- Before using the machine and after any impact, check for signs of wear or damage and repair as necessary.
- Replace worn or damaged plastic cutters together with their fixings in sets to preserve balance.

Use

- Use the product only in daylight or good artificial light.
- Avoid operating your product in wet grass, where feasible.
- Take care in wet grass, you may lose your footing.
- On slopes, be extra careful of your footing and wear non-slip footwear.
- Use across the face of slopes, never up and down.
- Exercise extreme caution when changing direction on

slopes.

- Using on banks and slopes can be dangerous. Do not use on **banks** or **steep** slopes.
- Do not walk backwards whilst operating your product, you could trip. Walk never run.
- Never cut grass by pulling the product towards you.
- Switch off before pushing the product over surfaces other than grass.
- Never operate the product with damaged guards or without guards in place.
- Keep hands and feet away from the plastic cutters at all times and especially when switching on the motor.
- Do not tilt the product when the motor is running, except when starting and stopping. In this case, do not tilt more than absolutely necessary and lift only the part which is away from the operator. Always ensure that the hand is in the operating position before returning the appliance to the ground.
- Never pick up or carry a product when it is operating or still connected to the mains supply.
- Remove the plug from the mains :
 - before leaving the product unattended for any period;
 - before clearing a blockage;
 - before checking, cleaning or working on the appliance;
 - if you hit an object. Do not use your product until you are sure that the entire product is in a safe operating condition;
 - if the product starts to vibrate abnormally. Check immediately. Excessive vibration can cause injury.

Maintenance and storage

- Caution - Do not touch rotating plastic cutters.
- Keep all nuts, bolts and screws tight to be sure the product is in safe working condition.
- Check the grassbox frequently for wear or deterioration.
- Replace worn or damaged parts for safety.
- Only use the replacement spare parts and accessories specified for your product.
- Be careful during adjustment of the product to prevent entrapment of the fingers between moving plastic tilters and fixed parts of the machine.
- Store in a cool dry place and out of reach of children. Do not store outdoors.
- Allow the product to cool for at least 30 minutes before storing.

CABLES

IMPORTANT

- Use only 1.00mm² size cable up to 40 metres length maximum.

Maximum rating :

1.00mm² size cable, 10 amps 250 volts AC.

THE MOW N VAC IS SUPPLIED WITH CABLE WIRED DIRECTLY INTO THE PRODUCT

- Flymo Mains Cables and Extension Cables are available from your local Approved Service Centre.
- Do not wire an extension cable directly to your product yourself. Please contact your local Approved Service Centre for further information on the connectors and kits available.
- Only use extension cables specifically designed for outdoor use.

CONNECTORS

IMPORTANT

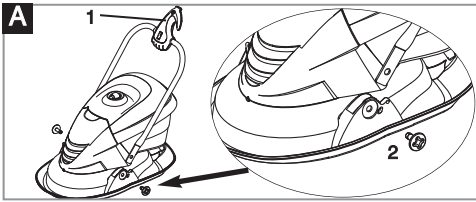
- Flymo connectors are suitable for use with 2 core cable only. Under no circumstances should these connectors be used for earthed products.
- All Flymo connectors and cables are of splashproof construction. They are not waterproof and must not be left outside permanently nor should they be submerged or immersed in water. Do not let cable lay or trail through pools of water or splashed with water from hose pipes.

MAINS PLUG REPLACEMENT

- If the plug supplied is cut off it should be destroyed. There is an electric shock hazard if a cut off plug is inserted into a 13 amp socket.**
- No earth required.** Our products are double insulated to EN60335 and under no circumstances should an earth be connected to any part of the product.
 - Ensure the mains voltage suits your product
 - IMPORTANT!**
The wires in the mains lead are coloured in accordance with the following code:
BLUE - NEUTRAL
BROWN - LIVE
The wire which is coloured BLUE must be connected to the Terminal which is marked with the letter 'N' or coloured BLACK. The wire which is coloured BROWN must be connected to the Terminal which is marked with the letter 'L' or coloured RED.
 - It is important that the outer sheath is clamped correctly into the 3-pin plug.
 - If in doubt consult your local Service Repairer or qualified electrician before the machine is used.
 - A 13 Amp fuse must be fitted to the Mains Plug.**
 - The normal plug fuse and household fuse only protect the electrical equipment and are not a safeguard against electrocution.

If your product is hard wired i.e. non detachable mains electric cable, a conversion kit and extension cable is available from all Husqvarna UK Ltd. Approved Service Centres which can be found in your local yellow pages.

Assembly Instructions

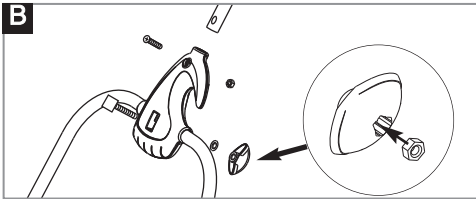


Assembly of lower handle to hood (A)

1. Place the ends of the lower handle into the slots ensuring that the joint is facing the correct way (A1).
2. Secure lower handle to hood by firmly pushing fixing pin through holes in hood and handle (A2).
3. Repeat on the other side.

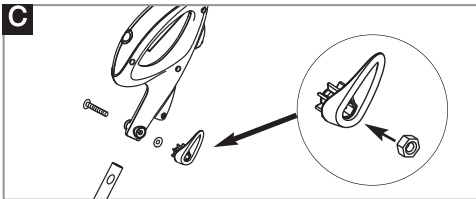
• NOTE

Should a problem occur when securing handle with the fixing pin, carefully lever the pin out of location and repeat steps 1 to 3 above.



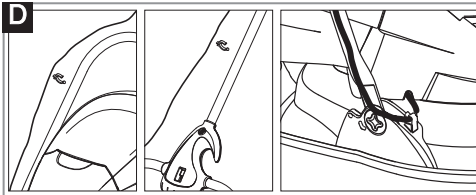
Assembly of handle tube to joint (B)

1. Ensure that the joint is centralised on the lower handle.
2. Line up the hole in the joint with the hole in the lower handle.
3. Insert the square headed bolt through the hole in the joint and the hole in the lower handle.
4. Insert an M6 nut into the lower wing knob.
5. Fit washer, then wing knob and tighten.
6. Insert handle tube into joint, lining up the holes.
7. Insert screw through joint and handle tube. Fit M5 nut and tighten screw.



Assembly of switch handle to handle tube (C)

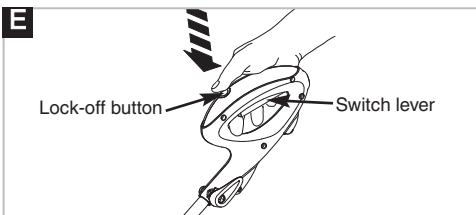
1. Insert the handle tube into the switch handle, ensuring the handle is in an upright position and lining up the holes.
2. Push bolt through the holes.
3. Insert M6 nut into the upper wing knob.
4. Fit washer, then wing knob and tighten.



Cable clips (D)

1. Fit the cable to the handles with the clips provided.
2. Ensure the cable is secured under the clip on the hood.

Starting and Stopping



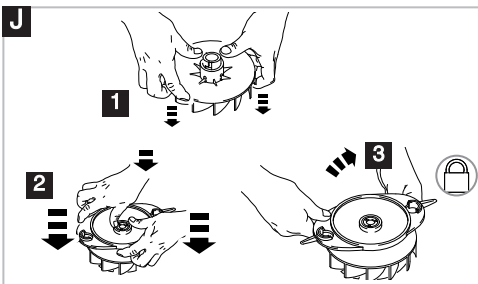
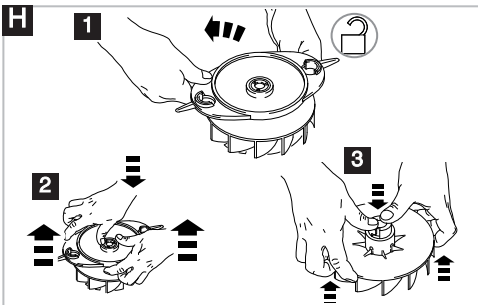
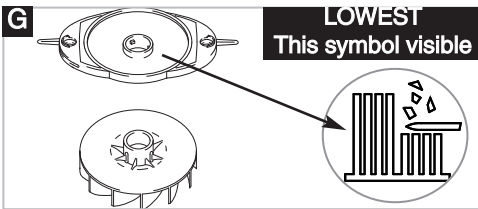
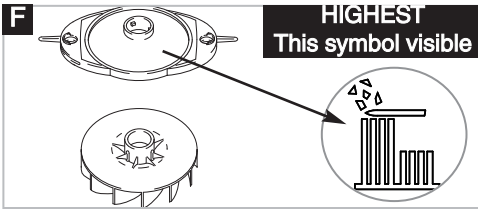
Starting

1. Hold as illustrated in **Figure E**.
2. To start, press the lock-off button down, whilst pressing the lock-off button, squeeze the switch lever.

Stopping

1. To stop your product, release the switch lever.

Adjusting the Cutting Height



- **THERE ARE 2 CUTTING HEIGHTS (F & G)**
- **Height of cut is adjusted by turning over the cutting head.**

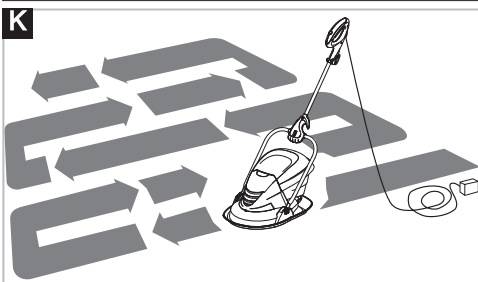
- Disconnect from the mains electricity supply and wait until the cutting head has stopped rotating. Turn your product upside down.

- **To Remove the Cutting Head and Fan (H)**
Hold the fan firmly and twist the cutting head anti-clockwise as illustrated. Hold the cutting head in the centre and remove as illustrated. Hold fan in the centre and remove as illustrated.
- Inspect for damage and clean as necessary before replacing the fan and the cutting head.

- **To Refit the Fan and the Cutting Head (J)**
Replace the fan as illustrated. Replace the cutting head, adjusting the height of cut as required. Hold the fan firmly and twist the cutting head clockwise, as illustrated.

- **IMPORTANT**
ENSURE FAN AND CUTTING HEAD ARE CORRECTLY LOCATED

How to Use



1. Start at the edge of the lawn nearest to the power point so the cable is laid out on the lawn you have already cut. **(K)**
2. Cut your grass twice a week during the growing season, your lawn will suffer if more than a third of its length is cut at one time.

Do Not Overload Your Product

Using in long thick grass may cause the motor speed to drop, you will hear a change in the motor sound. If the motor speed drops you may overload your product which may cause damage. When using in long thick grass a first cut with the cutting height set higher will help reduce the load. See Adjusting the Cutting Height.

Grassbox



- For optimum performance your product is designed to be used with the grassbox fitted.

Emptying the Grassbox (L)

- Stop the product and wait until the cutting head has stopped rotating before emptying the grassbox.
 1. Remove the grassbox lid.
 2. Lift the grassbox off the product and empty.
 3. Replace grassbox and lid carefully.
- **Failure to fit the grassbox and lid correctly will cause poor collection of grass clippings.**

Cutting System Maintenance

- **Always handle the plastic cutters with care - sharp edges could cause injury. USE GLOVES.**

Checking your Cutting System (M)

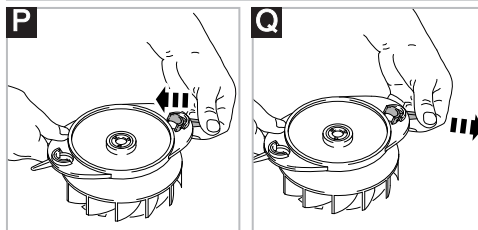
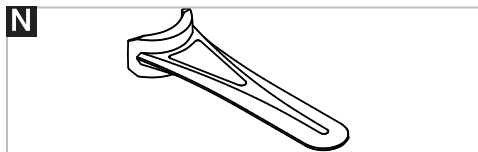
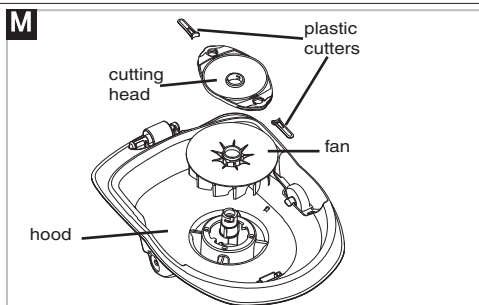
- The cutting system must be kept in good condition and inspected before and after use.
- Disconnect from the mains electricity supply and wait until the cutting head has stopped rotating. Turn your product upside down.
 1. Visually check cutting head for wear. Replace if damaged.
 2. Visually check plastic cutters for wear and replace when necessary.
 3. Plastic cutters should be straight. Replace if bent or twisted.

Replacing Plastic cutters (N)

- Use only genuine Flymo replacement plastic cutters specified for this product. These are available from all Husqvarna UK Ltd. Service Centres and major retail outlets.
- Plastic cutters must be replaced in pairs to retain balance.
- Two plastic cutters of the same type should be fitted.
- **Never fit a steel bar blade to this product.**

To Replace Plastic Cutters

- Disconnect from the mains electricity supply and wait until the cutting head has stopped rotating. Turn your product upside down.
 1. Push plastic cutter towards centre of cutting disc. Lift plastic cutter away from cutting head. **(P)**
 2. If the plastic cutter is broken during use - lever cutter out of the slot, and dispose of carefully.
 3. Fit new plastic cutters into the slots at each side of the cutting head and pull into place. **(Q)**
- **IMPORTANT ENSURE PLASTIC CUTTERS ARE CORRECTLY LOCATED.**



Caring

- It is very important that you keep your product clean. Grass clippings left in any of the air intakes or under the hood could become a potential fire hazard.

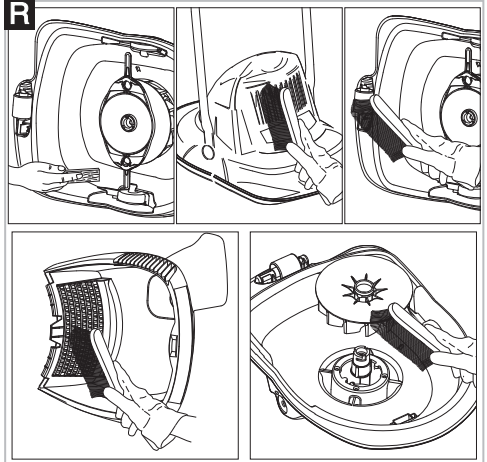
Cleaning (R)

- **USE GLOVES**

1. Remove grass from under the hood with a piece of wood or similar.
2. Using a soft brush - remove grass clippings from all air intakes, the roller, grassbox and grassbox lid.
3. Remove the cutting head, **see Figure H**, to gain access to the fan and clean with a soft brush.
4. Wipe over the surface of your product with a dry cloth.

- **IMPORTANT**

Never use water for cleaning your product. Do not clean with chemicals, including petrol, or solvents - some can destroy critical plastic parts.



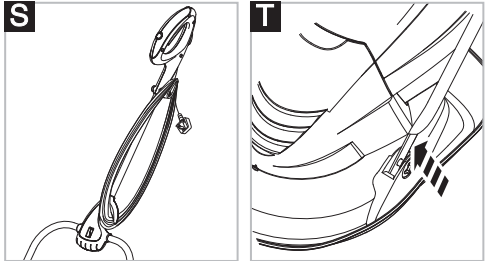
Storing your product

1. Your mains cable can be stored as illustrated in **figure S**.

Your product can be stored in a hanging position.

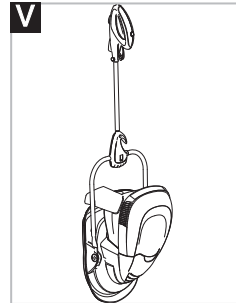
- The back of the switch handle has a hanging slot for storing the product on the wall.

1. Push the lower handle in on both sides (**figure T**) and the handle will drop down.
2. Hang the product from a hook or suitable screw as illustrated in **figure V**.



At the End of the Season

1. Replace plastic cutters, bolts, nuts or screws, if necessary.
2. Clean your product thoroughly.
3. Ask your local Service Centre to clean the air filter thoroughly and carry out any service or repairs required.



Fault Finding Hints

Fails to Operate

1. Is the Power Turned On?
2. Check the fuse in the plug, if blown replace.
3. Fuse continues to blow?

Immediately disconnect from the mains electricity supply and consult your local approved Service Centre.

Poor Flotation

1. Disconnect from the mains electricity supply.
2. Clean the underside of the hood and the fan blades.
3. Raise to a higher height of cut. See Adjusting the Cutting Height.
4. If poor flotation persists?

Disconnect from the mains electricity supply and consult your local approved Service Centre.

Poor Collection

1. Is the grassbox fitted correctly?
2. Are you using in straight lines?
3. Are you cutting more than one third of the grass length?
4. Do you need to raise the cutting height?
5. Follow the procedure described in "Poor Flotation".

Excessive Vibration

1. Disconnect from the mains electricity supply.
2. Replace broken or missing plastic cutters.
3. Check plastic cutters are fitted correctly.
4. If vibration persists?

Immediately disconnect from the mains electricity supply and consult your local approved Service Centre.

Service Recommendations

1. We strongly recommend that your product is serviced at least every twelve months, more often in a professional application.
2. Always use genuine Flymo Spare Parts.
3. Prepacked spares are available from most Husqvarna UK Ltd. stockists.
4. Your product is uniquely identified by a silver and black product rating label
5. If you have a problem with your machine contact your local Approved Service Centre ensuring you have full details of your product as described on the product rating label.
6. **Should it be necessary for work to be carried out**

by your Service Centre, it is important to take your complete machine including cable and any extension cables used.

A network of specialist dealers can be found in your local Yellow Pages. To obtain service on your Flymo product simply telephone or visit your local Service Centre. Should you require service under the terms of our guarantee the Service Centre will require proof of purchase.

All of the centres listed stock genuine Flymo Spare Parts. NOTE: Our Service Repairers act on their own behalf and are not empowered to commit or legally bind Husqvarna UK Ltd. in any manner whatsoever.

Replacement Parts

Plastic Cutters

Reference no.:

FLY014


Part no.:

513846990

Environmental Information

Husqvarna UK Ltd. are manufactured under an Environmental Management System (ISO 14001) using, where practical, components manufactured in the most environmentally responsible manner, according to company procedures, and with the potential for recycling at the end of the products' life.

- Packaging is recyclable and plastic components have been labelled (where practical) for categorised recycling.
- Awareness of the environment must be considered when disposing of 'end-of-life' product.
- If necessary, contact your local authority for disposal information.

- The symbol  on the product or on its packaging indicates that this product may not be treated as household waste. Instead it shall be handed over to the applicable collection point for the recycling of electrical and electronic equipment.

By ensuring this product is disposed of correctly, you will help prevent potential negative consequences for the environment and human health, which could otherwise be caused by inappropriate waste handling of this product.

For more detailed information about recycling of this product, please contact your local council office, your household waste disposal service or the shop where you purchased the product.

Guarantee & Guarantee Policy

If any part is found to be defective due to faulty manufacture within the guarantee period, Husqvarna UK Ltd., through its Authorised Service Repairers will effect the repair or replacement to the customer free of charge providing:

- (a) The fault is reported directly to the Authorised Repairer.
- (b) Proof of purchase is provided.
- (c) The fault is not caused by misuse, neglect or faulty adjustment by the user.
- (d) The failure has not occurred through fair wear and tear.
- (e) The machine has not been serviced or repaired, taken apart or tampered with by any person not authorised by Husqvarna UK Ltd..
- (f) The machine has not been used for hire.
- (g) The machine is owned by the original purchaser.
- (h) The machine has not been used outside of the country in which it was purchased.
- (i) The machine has not been used commercially.
 - * This guarantee is additional to, and in no way diminishes the customers statutory rights.

Failures due to the following are not covered, therefore it is important that you read the instructions contained in this Operator's Manual and understand how to operate and maintain your machine:

Failures not covered by guarantee

- * Replacing worn or damaged plastic cutters.
- * Failures as a result of not reporting an initial fault.
- * Failures as a result of sudden impact.
- * Failures as a result of not using the product in accordance with the instructions and recommendations contained in this Operator's Manual.
- * Machines used for hire are not covered by this guarantee.
- * The following items listed are considered as wearing parts and their life is dependent on regular maintenance and are, therefore not normally subject to a valid warranty claim: Plastic cutters, Cutting head, Electric Mains cable.
- * **Caution!** Husqvarna UK Ltd. does not accept liability under the warranty for defects caused in whole or part, directly or indirectly by the fitting of replacement parts or additional parts that are not either manufactured or approved by Husqvarna UK Ltd., or by the machine having been modified in any way

EC Declaration of Conformity

Husqvarna AB, 561 82 Huskvarna, Sweden

Declare under our sole responsibility that the product(s);

Category.....**Electric Lawn Trimmer**

Type(s)**HV280**

Identification of Series.....**See Product Rating Label**

Year of Construction.....**See Product Rating Label**

Conforms to the essential requirements & provisions of the following EC Directives:

98/37/EC (until 28.12.09), 2006/42/EC (from 29.12.09), 2004/108/EC, 2000/14/EC

based on the following EU harmonized standards applied:

EN60335-1, EN60335-2-91, EN786, EN50366, EN55014-1, EN61000-3-2, EN61000-3-3

The maximum A weighted sound pressure level L_{pA} at the operator's position, recorded on a sample of the above product(s) corresponds to the **Level** given in the table.

The maximum hand / arm vibration weighted value measured according to EN ISO 5349 on a sample of the above product(s) corresponds to the **Value** a_{h1} given in the table.

2000/14/EC: The Measured Sound Power L_{WA} & Guaranteed Sound Power L_{WA} values are according to the tabulated figures.

Conformity Assessment Procedure..... Annex VI
 Notified Body..... Intertek, Cleeve Road
 Leatherhead, Surrey
 KT22 7SB, England

Newton Aycliffe 19/10/2009
 M.Bowden
 Research & Development Director
 Husqvarna UK Ltd.
 Keeper of technical documentation




Type	HV280
Width of Cut (cm)	28
Speed of Rotation of Cutting Device (rpm)	7,350
Power (kW)	0.9
Measured Sound Power L_{WA} (dB(A))	92
Guaranteed Sound Power L_{WA} (dB(A))	93
Level (dB(A))	80.9
Value a_{h1} (m/s ²)	2.13
Uncertainty K of a_{h1} (m/s ²)	1.5
Weight (Kg)	6.3

Our policy of continuous improvement means that the specification of products may be altered from time to time without prior notice.

Copyright © 2008 Flymo S.A. All rights reserved. Flymo® and other product and feature names are registered or unregistered trademarks of Flymo S.A.

Husqvarna UK Ltd.
 Aycliffe Industrial Park
 NEWTON AYCLIFFE
 Co.Durham DL5 6UP
ENGLAND

Telephone - 01325 302302 Fax -01325 310339

5119549-05

